

Editor

Brian Nation CSci FIBMS
Email: briannation@ibms.org

Publisher

Trevor Moon
Email: trevormoon@stepex.com

Business Manager

Trevor Southerden
Email: trevorsoutherden@stepex.com

Journal Administration

Kate Phillips

Design

Ray Ecclestone
Dave Woodall

Page Production

Neal Klyman

Pathology in Practice is a supplementary magazine to *The Biomedical Scientist*, the Gazette of the Institute of Biomedical Science.

This publication may not be reproduced in any way without prior written consent of the publisher.



STEP
PUBLISHING

Step Publishing Ltd

Step House
North Farm Road
Tunbridge Wells
Kent TN2 3DR
Tel: 01892 779999
Fax: 01892 616177
Email: mail@stepex.com

ISSN 1465-9131

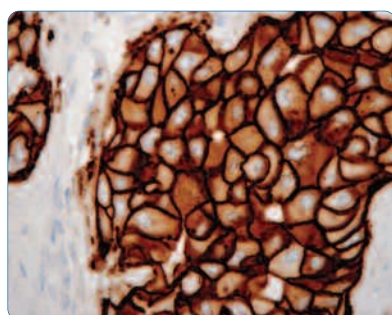
Printed by Printwells (Tunbridge Wells)



C. difficile testing, see page 44



Blood gas analysis, see page 50



Cancer diagnostics, see page 74

NEWS

43

ARTICLES

Evaluation of a lateral-flow GDH test to screen for *Clostridium difficile* infection 44

Lean in the laboratory: exploring 21st-century histopathology workflow solutions 46

Ease of use and low maintenance enhance blood gas analysis at the point of care 50

A move to the latest automation improves coagulation services 52

Maintaining a state-wide pathology network in Western Australia 54

Mass spectrometry: a new dawn for microbial identification and microbiology 58

Point-of-care immunoassay testing: six reasons to adopt Radiometer technology 60

A visit to Scotland: the Hologic Annual Medical Education Conference 63

Special staining: recruiting experience to deliver reliable quality 68

Moving molecular diagnostic testing into the routine laboratory 71

Breast cancer testing: major endorsement received from UCL Advanced Diagnostics 74

PRODUCTS

78

COVER STORY

Hologic's Cervista MTA automates HPV detection

Hologic is a leading developer, manufacturer and supplier of premium diagnostic products, dedicated to serving the healthcare needs of women in breast health, molecular diagnostics, gynaecology and skeletal health.

The diagnostics range of products aims to provide a complete solution for cervical screening and human papillomavirus (HPV) detection, from liquid-based cervical sample collection with the ThinPrep Papanicolaou test, to slide processing, staining and imaging, and HPV screening of cervical samples using the Cervista HPV tests.

The Cervista HPV tests use Invader Technology to detect the presence of a particular target. For HPV

screening, the Cervista range includes Cervista HPV HR and Cervista HPV 16/18, which can be analysed on the Cervista MTA (medium-throughput automation system) which automates DNA extraction and HPV detection with full walkaway operation.

Hologic continues to pioneer innovative solutions, and holds its Hologic Annual Medical Education Conference (HAMEC) that brings together eminent speakers to report current research studies as well as discuss future trends and technology requirements for cervical and HPV screening. Hologic's eighth HAMEC event was held in March this year in Scotland and attracted an audience of 160 delegates from hospitals and laboratories across northern Europe.

